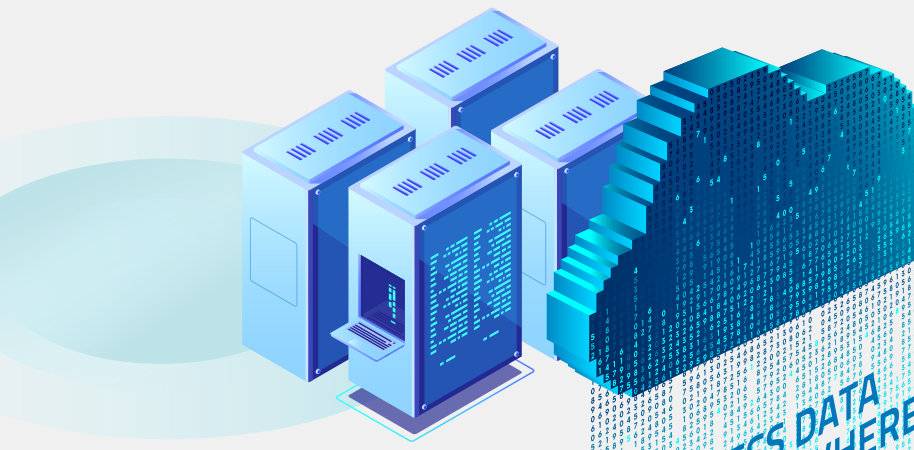


# AUTOMATED MOBILE WATER TESTING LABORATORY





ELICO		
pH	7.35	NTU
TURBIDITY	6.5	mg/L
TDS	411.7	mg/L
IRON	0.02	mg/L
FLUORIDE	0.05	mg/L
SULPHATE	223.61	mg/L
HARDNESS	442.27	mg/L
CHLORIDE	324.74	mg/L
ALKALINITY	375.62	mg/L
MANGANESE	0.15	mg/L



ACCESS DATA FROM ANYWHERE

**Analysis of 12 Chemical Parameters :**  
(pH, TDS, Turbidity, Iron, Residual Chlorine, Color, Fluoride, Nitrate, Hardness, Alkalinity, Chloride, Sulphate, Manganese) as per Uniform Drinking Water Monitoring Protocol. (GOVT. OF INDIA)



PUBLIC DRINKING WATER



Fully Automated with Location Tracking (GPS) and Remote Data Transfer (GPRS/3G/4G)

WORKING TOWARDS CLEANER AND SAFE WATER

## AUTOMATED MOBILE WATER TESTING LABORATORY

Automated Mobile Water Testing Laboratory is an effective surveillance of drinking water quality in rural areas. The lab is capable of measuring different water quality parameters. The Mobile Lab helps in quickly identifying the water quality problem on the spot at site.

Lower Reagent Consumption.  
Reduces Operating Costs.

Minimum Sample  
**< 1.5**  
Litres

Sample Testing  
at end Points.

Faster Analysis  
**< 10**  
mins



## SALIENT FEATURES

- Testing at end points
- Fully Automated
- Vibration & Shock Proof design
- Highly accurate and reliable
- Eliminates the need for manual data entry, Data captured by AuqaSense Mobile App
- Automatic Transmission of data over cellular network, The data can be shown on a live dashboards
- Useful in emergency situations where drinking water resources are contaminated and immediate results are required
- Integrated UPS & Generator for Un-Interrupted operation for 5 Hrs in case of emergency & natural disasters

## AquaSense Mobile App

The AquaSense Mobile App provided along with the Mobile Laboratory helps the technician to capture the Geo coordinates of the Water sample along with the sample profile, which includes source of water, block details, image etc. The captured data is stored in the NFC tag embeded in the water sample container.

